



# MONTHLY MEMBERSHIP PROGRESS REPORT

District 118 R

Results as of: 4/30/2015

GMT: Elisabeth Haderer

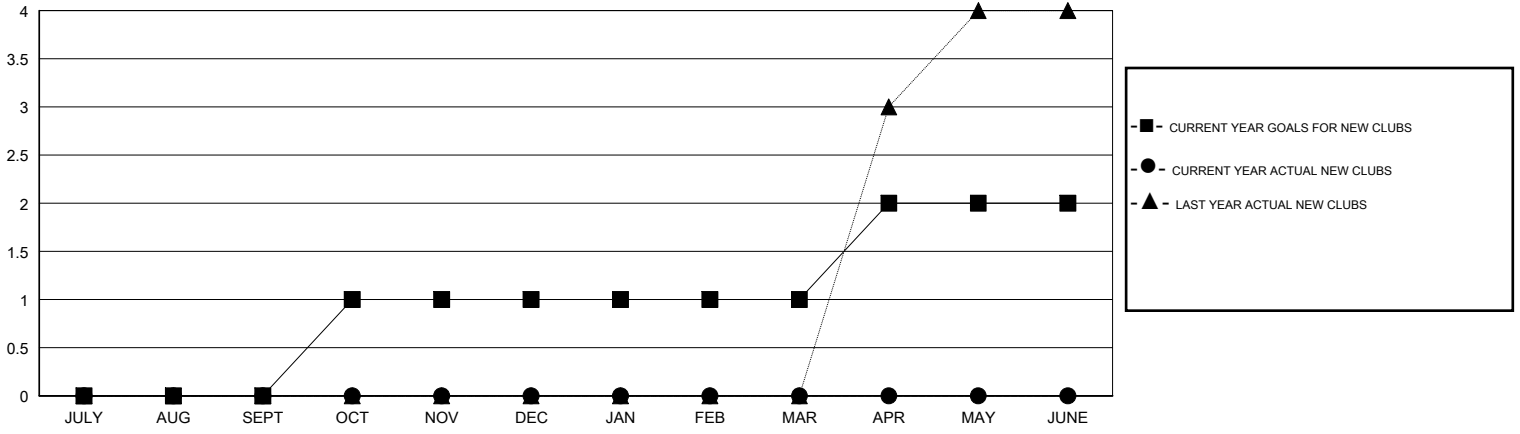
LOCATION TURKEY

GMT CA 4

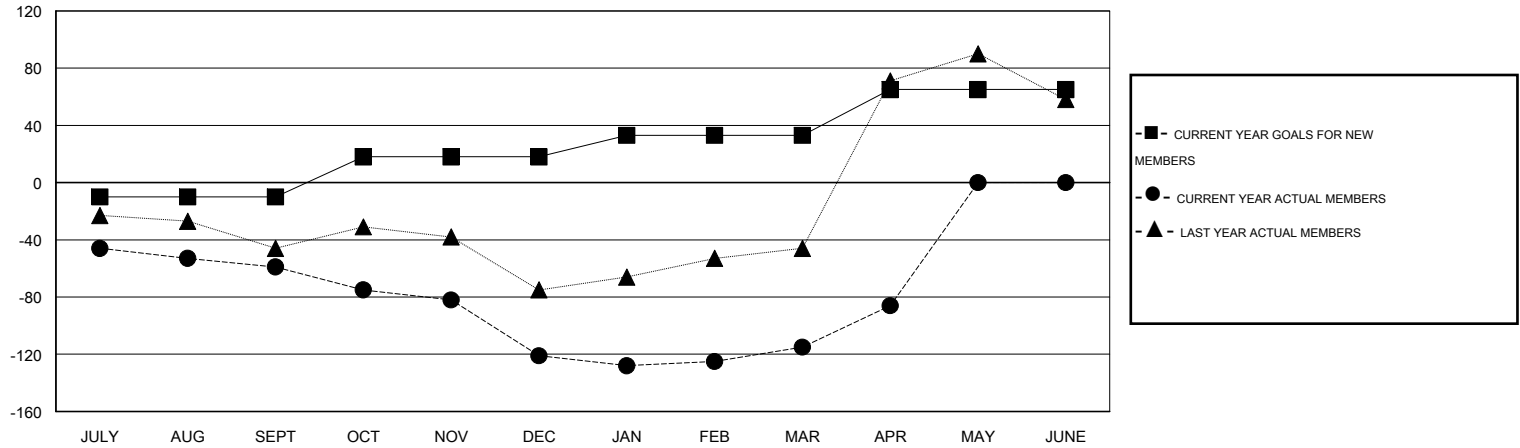
Clubs				
RESULTS FOR 2014-2015				
QUARTER	NEW CLUB GOAL	NEW CLUBS	DROPPED CLUBS	NET GAIN/LOSS
JULY/AUG/SEPT	0	0	1	-1
OCT/NOV/DEC	1	0	3	-3
JAN/FEB/MAR	0	0	0	0
APR/MAY/JUNE	1	0	0	0

Members				
RESULTS FOR 2014-2015				
QUARTER	NEW MEMBER GOAL	CHARTER AND NEW MEMBERS ADDED	DROPPED MEMBERS	NET GAIN/LOSS
JULY/AUG/SEPT	-10	5	64	-59
OCT/NOV/DEC	28	12	74	-62
JAN/FEB/MAR	15	25	19	6
APR/MAY/JUNE	32	34	5	29

GOALS AND ACTUAL NEW CLUBS CUMULATIVE



GOALS AND ACTUAL MEMBERS CUMULATIVE



DROPPED CLUBS: 4
------------------

23 CLUBS OF 57 ADDED 1 OR MORE NEW MEMBERS

GENDER DISTRIBUTION	
MALE	520 (48.10%)
FEMALE	561 (51.90%)

DROPPED MEMBERS	
DECEASED	1
CLUB CANCELLED	26
OTHER	135
<b>TOTAL</b>	<b>162</b>

[CLICK HERE FOR HEALTH ASSESSMENT DATA](#)

FAMILY UNIT MEMBERS	142
HEAD OF HOUSEHOLD	69
NON-HEAD OF HOUSEHOLD	73